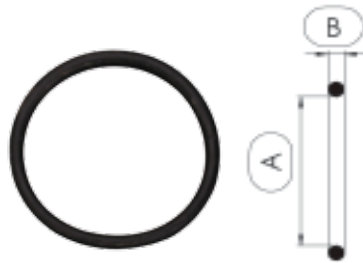

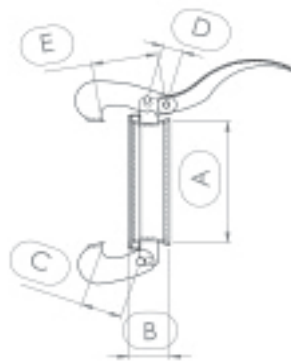



Rubber gasket



dimensione size - dimension		A	B		codice prodotto item code code produit
*		mm	mm	g	
76	3"	88	13	50	BAU
89	3"1/2	108	13	64	
108	4"1/4	133	15	110	
133	5"1/4	152	18	172	
159	6"1/4	171	18,2	214	
194	7"5/8	220	19	246	

Ring with hooks

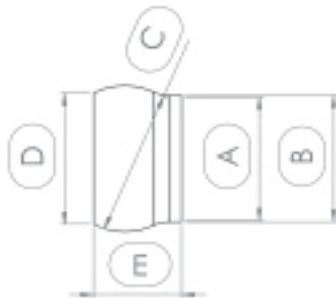


dimensione size - dimension		A	B	C	D	E		codice prodotto item code code produit
*		mm	mm	mm	mm	mm	kg**	
76	3"	87	25	47	30	75	1.02	BAU
89	3"1/2	112	32	54	39	90	1,71	
108	4"1/4	132	40	54	39	93	1,95	
133	5"1/4	156	48	66	41	106	2,79	
159	6"1/4	173	62	67	50	117	4,1	
194	7"5/8	220	78	67	50	117	6.03	


NOTA TECNICA: alla prima installazione del tubo si raccomanda di lubrificare le guarnizioni per ottenere la migliore tenuta idrica ed allungare la vita delle stesse.

TECHNICAL NOTE: Lubrification of the seals before first use is strongly recommended in order to along the seals's life and allow the best water tightness.

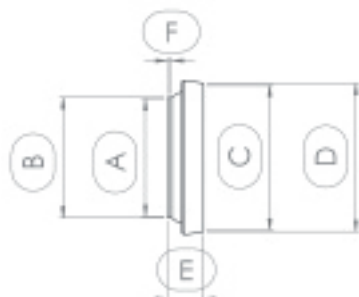
NOTE TECHNIQUE: Lors de la premiere utilisation il est recommandu de lubrifier les joints d'equipement.




Ball

dimensione size - dimension		A	B	C	D	E		codice prodotto item code code produit
*		mm	mm	mm	mm	mm	kg**	
76	3"	76	79	98	80	72	0,24	BAU
89	3"1/2	89	92	120	92	92	0,35	
108	4"1/4	108	112	145	112	106	0,62	
133	5"1/4	132	137	158	138	98	0,85	
159	6"1/4	158	162	180	153	104	1,02	
194	7"5/8	193	201	230	200	132	1,98	

Female coupling



dimensione size - dimension		A	B	C	D	E	F		codice prodotto item code code produit
*		mm	mm	mm	mm	mm	mm	kg**	
76	3"	76	79	98	117	36	22	0,2	BAU
89	3"1/2	88	92	120	137	46	29	0,37	
108	3"1/2	107	112	144	166	56	29	0,67	
133	3"1/2	132	139	162	191	56	29	0,98	
159	3"1/2	158	165	181	212	53	29	1.12	
194	3"1/2	193	201	234	263	83		2,37	