

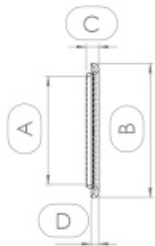


**Assembled coupling**

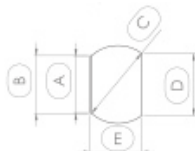
dimensione size - dimension		A	B	C		codice prodotto item code code produit
	*	mm	mm	mm	kg **	
60	2"1/2	99	153	189	1,03	S2F
80	3"	107	178	240	1,58	
100	4"	110	204	248	1,98	
120	5"	130	234	253	2,65	
150	6"	137	266	254	3,87	



**Rubber gasket**

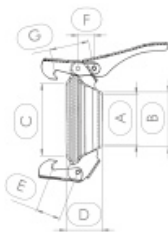
dimensione size - dimension		A	B		codice prodotto item code code produit
	*	mm	mm	g	
60	2"1/2	85	11,2	36	S2F S3F
80	3"	104,5	11,5	46	
100	4"	123	11,8	58	
120	5"	141	14,6	102	
150	6"	175	15	140	


**Ring**


dimensione size - dimension		A	B	C	D		codice prodotto item code code produit
	*	mm	mm	mm	mm	kg **	
60	2"1/2	77	118	25	11	0,22	S2F S3F
80	3"	97	142	27	15	0,33	
100	4"	120	166	25	14	0,45	
120	5"	132	191	37	16	0,63	
150	6"	170	224	37	16	1,03	

**Ball**


dimensione size - dimension		A	B	C	D	E		codice prodotto item code code produit
	*	mm	mm	mm	mm	mm	kg **	
60	2"1/2	54	56	90	61	74	0,24	S2F S3F
80	3"	74	77	111	82	86	0,32	
100	4"	92	96	130	101	92	0,49	
120	5"	112	116	149	120	100	0,66	
150	6"	138	143	175	142	105	1,04	

**Female coupling**


dimensione size - dimension		A	B	C	D	E	F	G		codice prodotto item code code produit
	*	mm	mm	mm	mm	mm	mm	mm	kg **	
60	2"1/2	57	59	92	52	30	22	48	0,57	S2F
80	3"	75	79	112	51	41	29	64	0,93	
100	4"	95	98	131	58	41	29	64	1,05	
120	5"	113	117	151	66	41	29	64	1,37	
150	6"	138	144	181	70	38	29	61	1,81	

NOTA TECNICA: alla prima installazione del tubo si raccomanda di lubrificare le guarnizioni per ottenere la migliore tenuta idrica ed allungare la vita delle stesse.  
 TECHNICAL NOTE: Lubrication of the seals before first use is strongly recommended in order to along the seals's life and allow the best water tightness.  
 NOTE TECHNIQUE: Eors de la première utilisation il est recommandé de lubrifier les joints d'équipement.